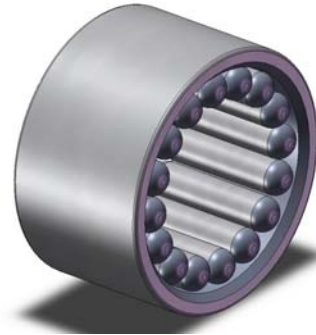


# PUMP SHAFT OPTIONS DRIVE & DRIVEN

## 52100 ALLOY STEEL ROLLER TYPE

- *Most common option*
- *Excellent for hydrocarbons*
- *Requires fair to good lubricity*



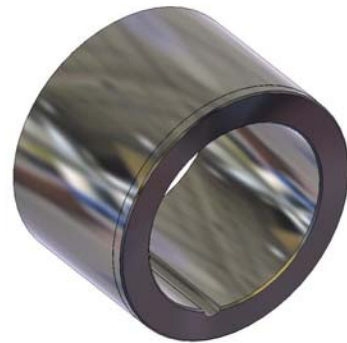
## CARBON GRAPHITE SLEEVE TYPE



- *Great for high temperatures*
- *Good with low or poor lubricity*
- *Excellent with Molten Sulfur*

## TUNGSTEN CARBIDE SLEEVE TYPE

- *Corrosion resistant option*
- *Extremely resistant to wear*
- *Good with poor to low lubricity*



## OTHER OPTIONS

**Bronze**

**Polymer**

**Tool Steel**

**440-C**

**PTFE**

