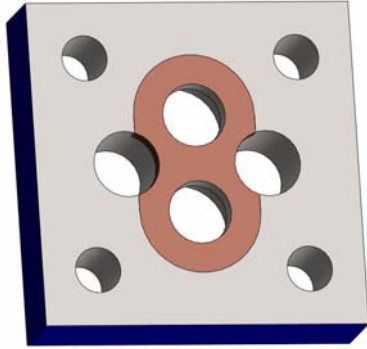


# PUMP CYLINDER OPTIONS

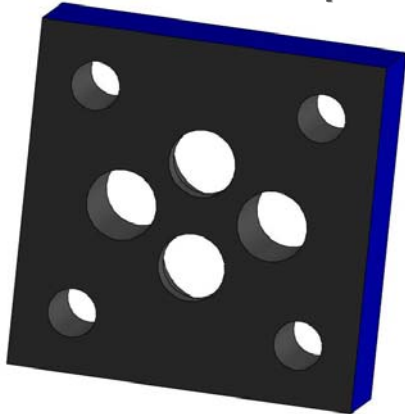
## BRONZE INLAY

High Pressure Pumps  
Close clearance pumps



## CAST IRON

High Pressure Pumps  
Lube Oil Pumps



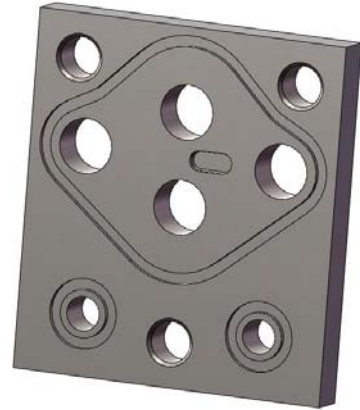
## CAST IRON INLAY

High Pressure Pumps



## STAINLESS STEEL

440-C with Integral Bearing  
Excellent with chemicals  
Best for low speeds



## TOOL STEEL

Type D2 with Integral Bearing  
Excellent with Molten Sulfur  
Extremely hard bearing  
Extends life of pump



## OTHER OPTIONS

- O-Rings to Seal High Pressure
- Steam Connections for Easy Heating
- Grooves to Lubricate Bearings