



Northern® Pump
Division of McNally Industries, LLC

When your
reputation
depends on it !

Sulfur Pumping Systems

Northern® Pump's unique design builds on more than a decade of serving the special needs of the sulfur-pumping industry. Our system features a robust, multi-plate pump design with hardened gears to offer the user the highest reliability and satisfaction.

Other features include:

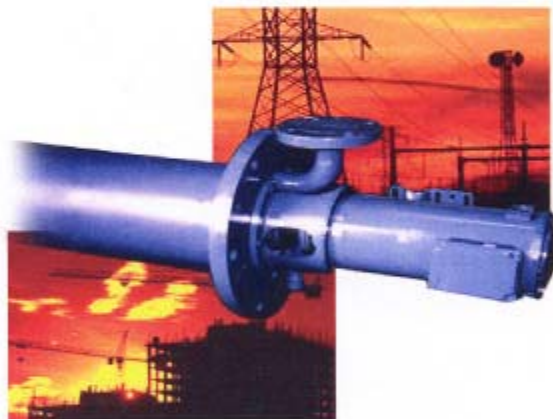
- Submerged pump ensures uniform heating and minimizes cleanup
- Single steam jacket encloses discharge pipe and drive shaft to minimize piping and maintenance
- C-face mounting of motor (gear box if used) provides excellent alignment and extended system life

Sump Style :

- Fully steam heated discharge tube
- Submerged pump—no shaft seal to leak
- Integral relief valve
- Built-in suction strainer
- Dynamically balanced drive shaft
- Oil lubricated ball bearing
- Hardened and precision ground shafts and gears
- Secondary leak barrier to prevent contamination
- Many pump sizes available

"Outside-the-tank" mounted pump:

- Many sizes available
- Mechanical shaft seal option
- Integral steam heated passages
- Pump internals lubricated by the pumped sulfur
- Hardened and precision ground shafts and gears



You can purchase a new sulfur unit assembly or rebuild and upgrade an existing sulfur unit assembly.

Northern® Pump
340 West Benson Ave
P.O. Box 129
Grantsburg, WI 54840

Phone: 715-463-8260
Fax: 715-463-5174
Toll Free: 800-366-1410
E-mail: info@northern-pump.com

Success Stories

Vertical Unit

