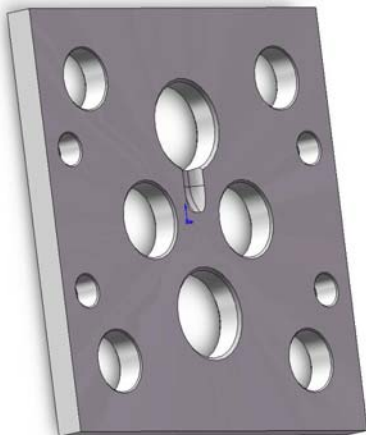


PUMP LINER (WEAR) PLATE OPTIONS

CERAMIC

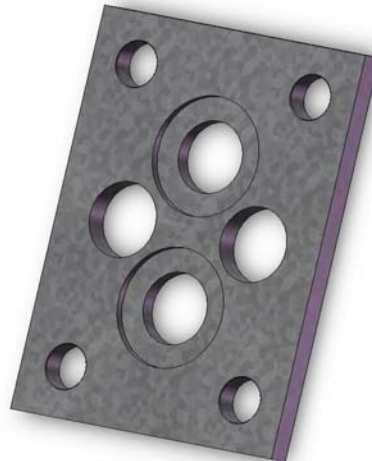
AD995 Alumina or Equivalent



- Used in abrasive applications
- Resists Wear – Extremely hard
- No High Temperatures

D2 TOOL STEEL

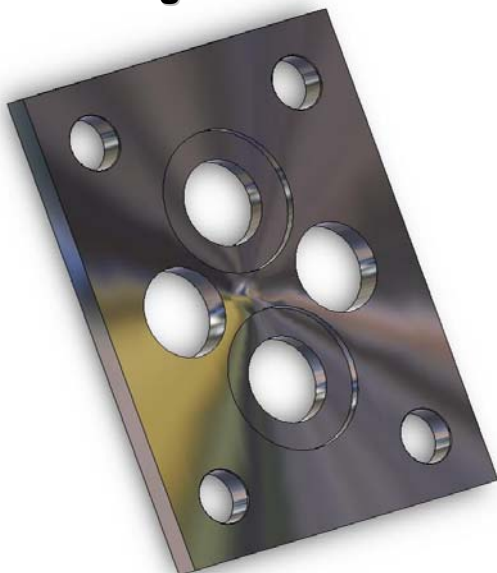
Nitride or Through Hardened



- Used in most applications
- Resists Wear – Extremely durable
- Withstand temps up to 800°F

440-C STAINLESS STEEL

Through Hardened



- Offers corrosion resistance
- Resists Wear – Hardened
- Excellent with resins and polymers

AMPCO® 18 BRONZE

Precision Ground



- Best in lube oil applications
- Great with reduced side clearance
- Eliminates most gear wear